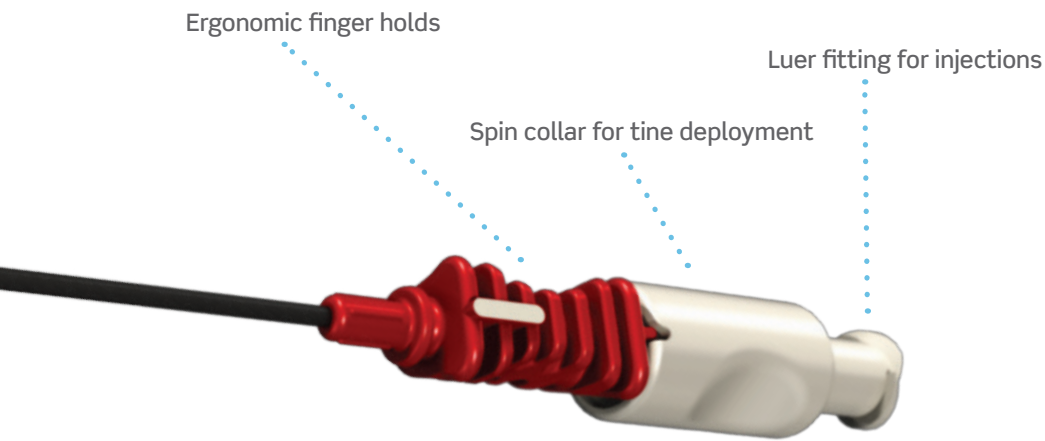


Versatility to Fit Each Practice

The Nimbus electrode is readily adaptable for a wide-range of ablation treatments. By delivering a larger, more predictable result, the Nimbus device allows physicians to work with greater efficiency.



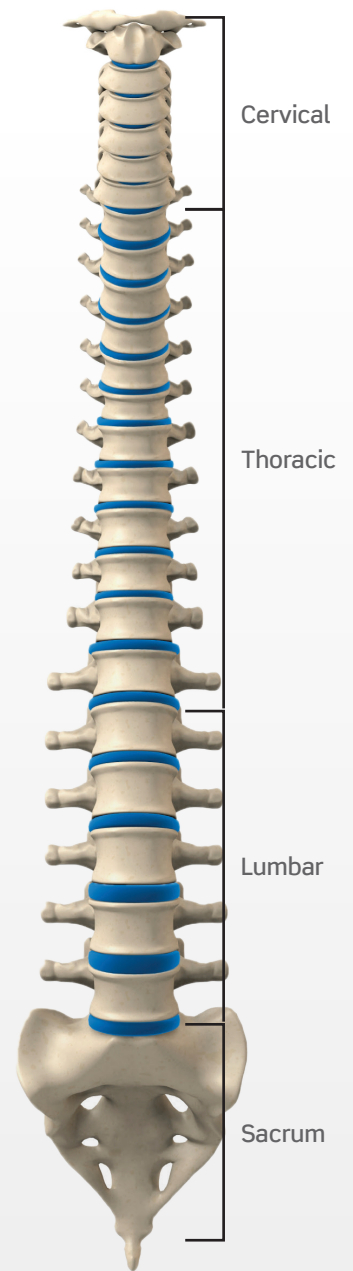
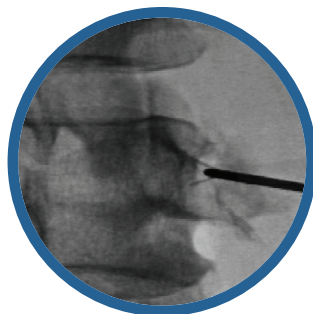
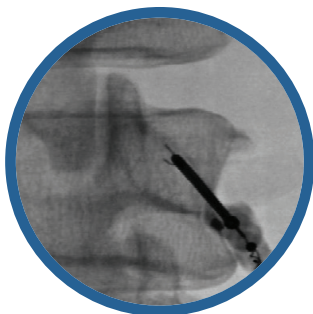
Efficient

When used in a bipolar approach for SI joint procedures, the Nimbus electrode can produce a continuous strip treatment area up to 20mm, saving procedure time.

Unlike conventional techniques, the Nimbus employs a simple “down-the-beam” lumbar approach that allows the electrode to be positioned perpendicular to the target nerve, providing for an efficient neurotomy procedure. The result is less procedure time, improved cost effectiveness and less x-ray exposure.

Nimbus approach:

Perpendicular approach towards the “eye of Scotty dog”, provides for a large footprint facilitating the nerve to be treated in one pass.



Sacroiliac Joint Procedure

