

Class of 2022 Demographics

50

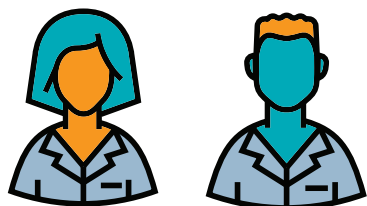
Students

100%

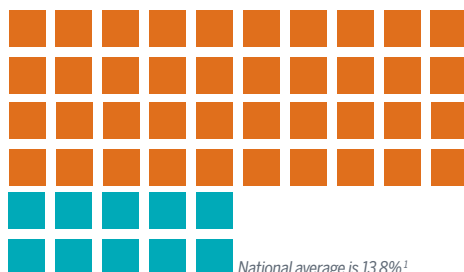
Receive some form of scholarship support

20»40

Age Range



National averages are 50.7% female & 49.3% male



National average is 13.8%¹



64% **36%**

Women

Men

20%

Identify with a race or ethnicity
underrepresented in medicine

92%

Are residents of Texas²



3.74 GPA

Class average; national average is 3.71



Degrees earned from **26 colleges and universities**,
including Harvard, Rice, Texas A&M, MIT,
The University of Alabama, UT Austin,
UT Dallas and Vanderbilt.



90% MCAT

Class average; national average is 81%³

Total Service Hours: **221,604**



47,102 Hours to Community

- Providing disaster response through various organizations
- Serving in the Peace Corps
- Supporting Special Olympics athletes
- Volunteering as a court-appointed special advocate



99,677 Hours to Health Care

- Addiction treatment
- Cancer centers
- Emergency medicine programs
- Hospice care
- Primary care and pediatrics



74,825 Hours to Research

- Cardiovascular physiology
- Gut microbiome
- Health informatics
- Treatment for Alzheimer's disease

¹Percentage of students from an underrepresented minority group currently enrolled in U.S. medical schools

²State law requires that 90% of students be Texas residents

³For all test-takers; shows percentage of test-takers who received the same or lower score

Note: This information, provided by Dell Medical School Student Affairs, is unofficial and subject to change prior to July 11, 2017. National averages are reported by the Association of American Medical Colleges and are based on 2016–17 data.