



THE UNIVERSITY OF TEXAS MEDICAL BRANCH AT GALVESTON JOHN SEALY SCHOOL OF MEDICINE



John Sealy School of Medicine



Compassion
Integrity



Respect
Diversity



Lifelong Learning

WHO WE ARE

The University of Texas Medical Branch (UTMB Health) is an inclusive, collaborative community of forward-thinking educators, scientists, clinicians, staff, and students dedicated to a single purpose—improving health. We prepare future health professionals for practice, public service, and lifelong learning through innovative curricula and individualized educational experiences. We advance understanding and treatment of illness and injury through groundbreaking research, in the lab and at the bedside, including the commercialization of such research, as appropriate. We deliver skilled and patient-centered health care, and we continue to shape the future of health sciences education, research, and clinical care by always asking, “What’s next?”



MISSION

UTMB Health’s mission is to improve health for the people of Texas and around the world by offering innovative education and training, pursuing cutting-edge research and providing the highest quality patient care.



VISION

We work together to work wonders as we define the future of health care and strive to be the best in all our endeavors.



VALUES

- We demonstrate compassion
- We always act with integrity
- We show respect to all
- We embrace diversity
- We promote lifelong learning

Nondiscrimination, Equal Employment Opportunity and Affirmative Action

The University of Texas Medical Branch, in compliance with applicable federal laws and regulations, strives to maintain an environment free from discrimination against individuals on the basis of race, color, national origin sex (including pregnancy), age, religion, disability, sexual orientation, gender identity and expression, genetic information, or veteran status. This includes, but is not limited to, academic program admissions, employment, financial aid, health care services, educational services, and access to UTMB programs, facilities, or services. This applies to all employees and students, and anyone who utilizes UTMB facilities.

The University of Texas Medical Branch - Site Policies & Required Links: <https://www.utmb.edu/site-policies>

COME JOIN THE LEGACY



Congratulations on your educational progress so far. Your interest in a career in the health professions demonstrates a strength of character and dedication to helping others. You are seeking one of the noblest careers available.

At the University of Texas Medical Branch (UTMB), we cherish the opportunity to help you gain the knowledge and skills necessary to practice the art of healing while you continue to develop that character of service.

Throughout our over 130-year history, John Sealy School of Medicine has trained men and women to serve others throughout the state of Texas, United States of America, and the world. Where there is a healthcare need, UTMB graduates have reached out to lend a hand. We have graduated more than 15,000 physicians with approximately 4,000 actively practicing in Texas. As a student and eventual graduate, you will join this distinguished group of alumni in caring for those in our communities. You will carry the UTMB banner with its long history of training caring, compassionate, and competent clinicians.

During your studies, you will work with internationally-recognized health educators and enjoy the resources of our new Health Education Center (HEC). The HEC provides active learning, interdisciplinary education, and training through patient simulation, in addition to the following:

- Enhanced environment for simulation training;
- Large multipurpose “flexible” learning studios;
- State-of-the-art technology; and
- Collaborative spaces that facilitate “random collisions” between students, residents, faculty members, and staff.

Here at UTMB, leveraging resources to facilitate student success is one of our top priorities. Each of UTMB’s five schools is characterized by first-class leadership, faculty, and academic programs. Our focus on interprofessional education prepares trainees from all academic areas to work collaboratively and deliver team-based, patient-centered care that is the standard today.

I hope you will choose to join us!

Sincerely yours,

Charles P. Mouton, MD, MS, MBA
Executive Vice President, Provost
and Dean of the School of Medicine

The University of Texas Medical Branch (UTMB Health) at Galveston has been at the forefront of educational, research and clinical excellence. Today, UTMB Health's researchers are making investigative breakthroughs and therapeutic developments that are changing the world, including internationally recognized work on Ebola, Zika, and COVID-19. And the institution's clinical enterprise is growing dynamically to meet regional health care needs.

UTMB is a world leader in COVID-19 research, conducting cutting-edge vaccine development research and participating in numerous promising vaccine trials in an effort to save lives and improve care during an unprecedented global pandemic.

UTMB offers a full range of clinical training opportunities at four hospital campuses and a network of primary and specialty care clinics, ranging from community-based facilities to a large, tertiary care center.

UTMB is one of the world's largest university-based vaccine development centers and was named a World Health Organization Collaborating Center for Vaccine Research, Evaluation and Training on Emerging Infectious Diseases.

UTMB's Center for Polar Medical Operations (CPMO) serves the National Science Foundation's US Antarctic Program (USAP), enabling vital scientific research from the most remote places on Earth. Providers at the CPMO manage health services at the three Antarctic sites operated by the U.S. — McMurdo, Amundsen-Scott South Pole and Palmer stations.

Scientists in UTMB's Galveston National Laboratory—the only national laboratory in Texas and the only fully-functional biosafety level 4 (BSL4) lab at a U.S. university—worked with UTMB's clinical laboratory experts to quickly develop COVID-19 testing capability, enabling UTMB to test viral samples from more than 165 counties across Texas.

Among only seven percent of U.S. hospitals with nursing Magnet status, a prestigious designation that recognizes excellence in nursing.

UTMB scientists are conducting cutting-edge research aimed at reducing memory problems associated with Alzheimer's disease and studying potential links between traumatic brain injuries and neurodegenerative disorders.

UTMB scientists engineered the world's first Zika virus infectious clone, a key to rapid vaccine development and unraveling how the disease causes birth defects and have found that a Zika virus vaccine under development may hold promise for targeting and killing the brain cancer known as glioblastoma.

UTMB was named a five-star academic health center for three consecutive years, receiving the prestigious Vizient Bernard A. Birmbaum, MD, Quality Leadership Award in 2017, 2018 and 2019 in recognition of superior quality of care.

UTMB was named to the IBM Watson Health 100 Top Hospitals list for 2020, ranking in the top 15 nationwide among major teaching hospitals.

Level 1 Trauma Center provides care to 1.2 million people in a nine-county service area and is one of three such centers serving all ages in populous Southeast Texas; the only trauma center in the region that is also a Level 1 burn center.

Educating rehabilitation scientists to work with large databases (such as CMS) for rehabilitation research to better understand health care.

In partnership with the College of Public Health and Health Professions at the University of Florida and the University of Southern California, received a \$5 million grant to educate and train scientists who study the rehabilitation of people with neuromuscular and neurological conditions such as dementia and muscular dystrophies.

LEADING THE WAY IN MEDICAL EDUCATION

1ST

1st nationally in number of Hispanic medical school graduates
(with the exception of medical schools in Puerto Rico)

2nd nationally in number of underrepresented minority medical school graduates

2nd nationally in the number of African American medical school graduates
(with the exception of medical schools at historically black universities)

2ND



4

Campuses

8

Hospitals

95

Clinics

4,000

Approximately 4,000 physician alumni practicing medicine in Texas,
the highest number from any Texas medical school

A leader in simulation innovation designed for today's medical education



THE INTEGRATED MEDICAL CURRICULUM (IMC)

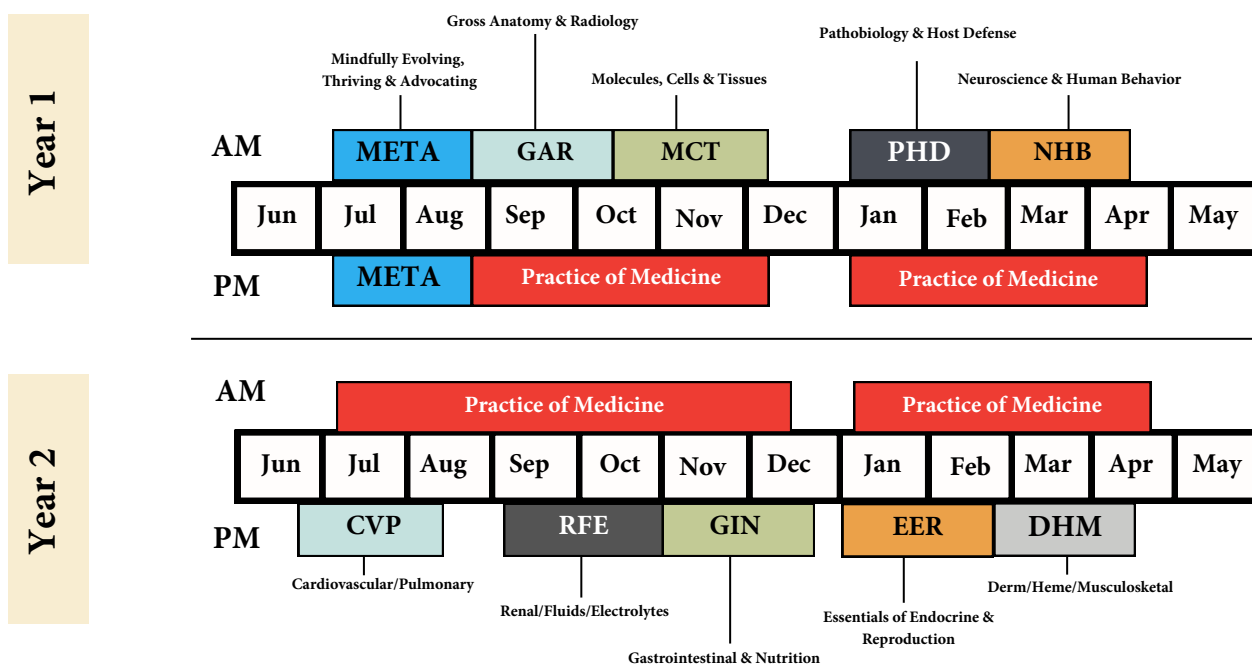
Pre-Clerkship (Years 1 & 2)

Our pre-clerkship courses emphasize small group (8-9 students per group) problem-based learning (PBL) sessions highlighted by student-centered, active learning with faculty facilitators. PBL is a critical and successful teaching methodology that contributes to the success of the curriculum, with faculty facilitators evaluating the quality of student participation in their small groups. Supporting lectures, laboratories, clinical wrap-up sessions, and other faculty-led learning activities reinforce students' understanding of concepts and fill in knowledge gaps. The Office of Academic Support & Career Counseling provides large group and individual tutoring for students who need additional support.

Each course provides clinical and scientific problem-solving activities with faculty feedback, encouraging students to evaluate their understanding of the material prior to end-of-course examinations. Another valuable teaching tool for the student are simulated clinical encounters, called standardized patients, to enhance patient-centered healthcare. Standardized patients provide students with a safe learning environment to practice their clinical skills early and strengthen communication skills. Pre-clerkship courses use customized NBME examinations so that students may ascertain their knowledge acquisition and application against national metrics.

The year-long Practice of Medicine (POM) course serves as a focal point in clinical skills development during Years 1 and 2. POM emphasizes practical development in communication, medical interviewing, and physical examination skills, complemented by principles of medical ethics, professionalism, and evidence-based medicine/clinical reasoning. Basic clinical skills learned in Year 1 are reinforced through regularly scheduled half-day visits to ambulatory primary care physician practices in the community. These experiences are expanded in Year 2 with periodic hospital and ambulatory clinical experiences to practice and develop clinical reasoning and decision-making abilities, especially as they relate to each organ system.

Overview of Pre-Clerkship Curriculum



Typical Weekly Schedule for Courses in Year 1*

The curriculum schedule allows the student ample time for self-study and assimilation of information.

	Monday	Tuesday	Wednesday	Thursday	Friday
8:00 AM	Basic Science Large Group Session		Basic Science Large Group Session		Basic Science Large Group Session
9:00 AM		Laboratory or Basic Science Application Session			
10:00 AM	Small Group PBL		Small Group PBL		Small Group PBL
11:00 AM					
12:00 PM	LUNCH				
1:00 PM		Practice of Medicine Small Group		Practice of Medicine Clinical Site Visits or Skills Sessions**	
2:00 PM					
3:00 PM					
4:00 PM					

- Practice of Medicine site visits include University and Community sites.
- Examinations typically occur every 4 weeks on Friday with no other scheduled activities.

* In Year 2, Practice of Medicine meets in the morning and basic science activities occur in the afternoon.

**Some weeks; day of week varies

Clerkship (Year 3)

Year 3 consists of 48 weeks of instruction, which include the following:

- Introduction to Clerkships and Clinical Skills
- Internal Medicine
- Family Medicine
- Pediatrics
- Surgery
- Psychiatry
- Obstetrics/Gynecology
- Neurology
- Elective
- Concept Integrations Week
- Practice of Medicine Year 3 (Optional)

Note: UTMB offers NBME shelf exams in clerkships of 4 weeks or more.

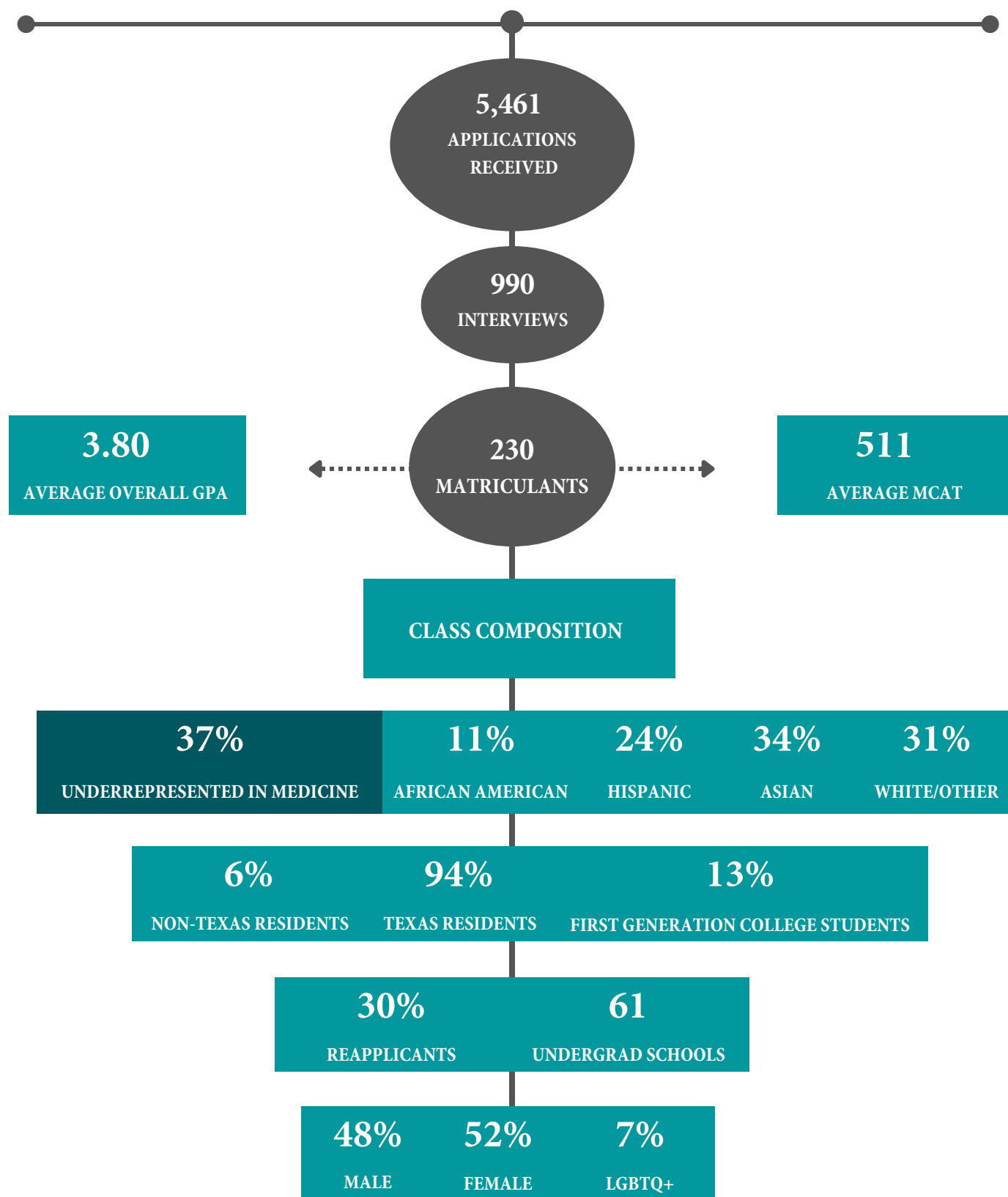
Post Clerkship (Year 4)

Year 4 consists of 40 weeks of instruction, which include the following:

- Emergency Medicine Selective
- Health Systems Science and Community Service Longitudinal Course
- Acting Internship Selective
- Basic Science/Humanities Selective
- 2 Clinical Electives
- 18 weeks Additional Electives completed at ANY TIME during medical school
- Transition to Residency Course
- Practice of Medicine Year 4 (Optional)

Years 3 and 4 courses are offered in Galveston, Houston, Beaumont and Tyler, Texas.

2022 ENTERING CLASS PROFILE





AREAS OF SCHOLARLY CONCENTRATION

Bilingual Health
Community Engagement
Global Health
Geriatric Health

Public Health
Physician Healer
Rural Health
Translational Research



DUAL DEGREE OPPORTUNITIES

MD-Master of Public Health (MPH)
MD-Master of Science (MS)
MD-Master of Arts (MA)
MD-Master of Business Administration (MBA)
MD-PhD Combined Degree Program



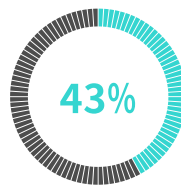
MATCH - GRADUATING CLASS OF 2022

STUDENTS
MATCHED

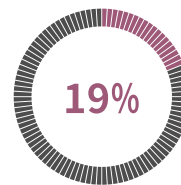
214

MATCH RATE

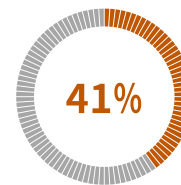
98%



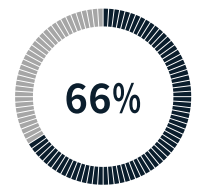
Matched in
Primary Care: 94



Matched at
UTMB: 41



Matched in UT
System: 87



Matched in
Texas: 141

Top 4 States

- 1 Texas
- 2 New York
- 3 California
- 4 Maryland



TOP 5 SPECIALTIES

- | | | | |
|---|-------------------|----|-------|
| 1 | Internal Medicine | 37 | 16.9% |
| 2 | Family Medicine | 24 | 11.0% |
| 3 | Pediatrics | 22 | 10.0% |
| 4 | Surg-Prelim | 17 | 7.8% |
| 5 | Psychiatry | 16 | 7.3% |

MATCH LIST - GRADUATING CLASS OF 2022

Anesthesiology

Baylor Scott & White Med Ctr, TX
Texas Tech U Affil-Lubbock
U Miami/Jackson Health System-FL
U Texas HSC-San Antonio, TX
****UTMB (8)**
U Texas Med Sch-Houston (2)

Dermatology

Barnes-Jewish Hospital, St. Louis, MO
****UTMB (3)**

Emergency Medicine

Baylor Coll Med-Houston, TX (2)
Baylor Scott & White Med Ctr-TX (2)
CMSRU/Cooper University Hospital-NJ
Duke Univ Med Ctr-NC
Henry Ford Wyandotte Hospital-MI
San Antonio Military Med Ctr
U Texas Med Sch-Houston
University of Missouri-KC Programs
University Hosps-Jackson-MS

Family Medicine

Baylor S&W Med Ctr-Round Rock-TX
CHRISTUS Health-TX (3)
Conroe Reg Med Ctr-TX (2)
David Grant Med Ctr-Travis AFB
DeTar Healthcare System-TX
John Peter Smith Hosp-TX
Kirk Kerkorian SOM at UNLV-NV
Memorial Hermann Hosp-TX
Tacoma Family Med-WA
Texoma Med Ctr-TX
U Arkansas COM-Little Rock
U Texas HSC-Tyler (3)
****UTMB (2)**
U Texas Med Sch-Houston (2)
U Texas Rio Grande Valley
U Wisconsin SOM and Public Health (2)

General Surgery

HCA Houston Healthcare/U Houston-TX
U Colorado SOM-Denver
U Iowa Hosps and Clinics
U South Florida Morsani COM-Tampa
U Texas Hlth Sci Ctr-VA DoD
U Texas HSC-San Antonio (2)
****UTMB (2)**

Internal Medicine

Baptist Hosps of Southeast Texas
Baylor Coll Med-Houston-TX (4)
Baylor Scott & White Med Ctr-TX (2)
Baylor Univ Med Ctr-Dallas-TX (2)
CHRISTUS Health-TX
Eastern Idaho Reg Med Ctr
HCA Florida Citrus Hosp
Indiana University SOM
Methodist Health System Dallas-TX
Methodist Hospital-Houston-TX
Riverside Community Hospital-CA
TIGMER-TX
U New Mexico SOM (2)
U Texas at Austin Dell Medical School, TX (4)

Internal Medicine (cont.)

U Texas HSC-San Antonio, TX (3)
U Texas HSC-Tyler, TX
****UTMB (7)**
U Texas Med Sch-Houston, TX
U Washington Affil Hosps
University of Chicago Med Ctr-IL
University of Nebraska Med Ctr
Vanderbilt Univ Med Ctr-TN
Wake Forest Baptist Med Ctr-NC

Internal Medicine/Pediatrics

Hosp of the Univ of PA
U Oklahoma COM-OK City

Internal Medicine/Preliminary

Barnes-Jewish Hosp-MO
Baylor Scott & White Med Ctr-TX
HCA Medical City Healthcare-TX (2)
MedStar Union Memorial Hosp-MD
Olive View-UCLA Med Ctr-CA
Presbyterian Hosp-Dallas-TX
****UTMB (5)**

Internal Medicine-Prev Med/Aerospace

****UTMB (2)**

Neurological Surgery

Montefiore Med Ctr/Einstein-NY
****UTMB**

Neurology

Barrow Neurological Inst at SJHMC-AZ
Case Western/Univ Hosps Cleveland Med Ctr-OH
Rush University Med Ctr-IL
U Rochester/Strong Memorial-NY

Obstetrics and Gynecology

U Oklahoma COM-OK City
U Texas HSC-San Antonio (2)
****UTMB (2)**
Univ of Chicago Med Ctr-IL
University at Buffalo SOM-NY

Ophthalmology

Texas Tech University
Wilmer-Johns Hopkins

Orthopedic Surgery

U Texas HSC-San Antonio
****UTMB (2)**

Otolaryngology

U Arizona COM-Tucson
****UTMB**

Pathology

Barnes-Jewish Hosp-MO
Duke Univ Med Ctr-NC
Johns Hopkins Hosp-MD
San Antonio Military Med Ctr
Stanford Health Care-CA
U Florida COM-Shands Hosp

Pediatrics

Baylor Coll Med-Houston-TX (4)
Case Western/Univ Hosps Cleveland Med Ctr-OH
Childrens Mercy Hospital-MO

Pediatrics (cont.)

Jefferson Med Coll/duPont Childrens-PA
Johns Hopkins Hosp-MD
LSU SOM-New Orleans-LA
Tripler Army Medical Center
U Iowa Hosps and Clinics
U Texas at Austin Dell Medical School (2)
U Texas HSC-San Antonio (4)
U Texas Med Sch-Houston (2)
U Texas Southwestern Med Sch-Dallas
UCLA Med Ctr-CA (2)

Pediatrics/Medical Genetics

Baylor Coll Med-Houston-TX

Physical Medicine and Rehabilitation

U Texas HSC-San Antonio

Plastic Surgery

Oregon Health & Science Univ
U Texas Med Branch-Galveston

Psychiatry

Creighton University-NE
FAU-Schmidt COM-FL
Harvard South Shore-MA
HCA Healthcare/TriStar Nashville-TN
NYP Hosp-Columbia Univ Med Ctr-NY
Texas Tech U Affil-El Paso
U Colorado SOM-Denver
U Texas HSC-San Antonio
U Texas HSC-Tyler (3)
****UTMB (3)**
U Texas Southwestern Med Sch-Dallas
Walter Reed Nat'l Military Med Ctr

Psychiatry/Child Psychiatry

****UTMB (2)**

Radiology-Diagnostic

Baylor University Med Ctr-Dallas-TX (2)

Radiology-Interventional

Rush University Med Ctr-IL

Surgery-Preliminary

Baylor Coll Med-Houston-TX (2)
Case Western/Univ Hosps Cleveland Med Ctr-OH
ISMMS Mount Sinai Hospital-NY
Medical University of SC
Methodist Hospital-Houston-TX
Penn State Hershey Med Ctr-PA
U Kentucky Med Ctr
U New Mexico SOM
U Texas HSC-San Antonio (2)
****UTMB (2)**
U Texas Med Sch-Houston
U Texas Rio Grande Valley
U Texas Southwestern Med Sch-Dallas
Zucker SOM-Northwell NS/LIJ-NY

Urology

Hofstra Northwell School of Medicine
Medical College of Wisconsin

Vascular Surgery

****UTMB**
U Texas Med Sch-Houston

FINANCIAL AID & SCHOLARSHIPS

The mission of Financial Aid is to empower our students with financial resources and information to attend The University of Texas Medical Branch. The Financial Aid Staff is committed to providing quality service and valuable resources to students regarding the financial aid process, budgeting assistance, and student debt management.

FAFSA

→ **UMTB FAFSA Code: 013976**

→ Available on October 1st of each year, and it is awarded on a first come-first served basis.

→ You can begin completing your FAFSA even if you haven't been accepted into a school yet.

→ UTMB begins awarding financial aid in March of each year and the aid must be accepted before any funds can be disbursed.



Types of Scholarships

- General Scholarships
- Academic Scholarships
- Need-based Scholarships
- Recruitment Scholarships

Application Cycle: March 1 - May 15

40% of scholarship applicants receive scholarships



Visit for more
information



ACADEMIC SUPPORT & CAREER COUNSELING

The primary mission of Academic Support and Career Counseling (ASCC) is to enhance students' academic performance and personal well-being, promote student excellence, and advance students' career goals.

Office Objectives

Preparing for course, clinical rotation, and board/certifying exams

- Creating study plans
- Test-taking strategies
- Identifying and selecting resources
- Effectively using question banks
- Practice exam strategies
- Navigating board exam accommodations applications

Learning effectively and efficiently

- Adjustment to learning within school programs
- Reading and study strategies
- Time management skills
- Active learning strategies

Maintaining wellness

- Coping with test anxiety
- Stress management skills
- Concentration and motivation strategies
- Preventing burnout

Office Services

Course Support

- Group tutoring program
- Individual tutoring
- Shelf exam support
- Workshops
- Consultations

USMLE Preparation

- Mentoring program
- Practice Exams
- Consultations
- Workshops

Career Counseling/Residency Prep

- Career exploration assessments
- Personal statement review
- Mock interviews



Visit for more
information

DIVERSITY EQUITY INCLUSION



Inclusive Curriculum Statement

The John Sealy School of Medicine is committed to anti-racism, diversity, inclusion, and health equity. As we prepare the future healthcare workforce, it is our solemn duty and privilege to prepare our learners to care for all patients while honoring race, color, sex, ethnicity, national origin, age, ability status, religion, sexual orientation, gender identity, or expression, veteran status, and genetic information. We acknowledge and affirm the inherent value and dignity of all individuals.

Office of Diversity, Health, Inclusion and Equity

- Respects and values the inherent worth of everyone from all races, ethnic backgrounds, ages, genders, religions, sexual orientations, disabilities, economic or veteran status, and other diverse perspectives and individual differences
- Committed to providing a welcoming place for all
- Aims to increase workforce diversity through various program initiatives

Diversity Initiatives and Student Organizations

- Allies in Health
- American Medical Women's Association
- Asian Pacific American Medical Students Association
- Colors of Medicine
- First in the Family
- Frontera de Salud
- Hispanic Center of Excellence
- Jewish Student Association
- Latino Medical Student Association
- Muslim Medical Association
- Professionals Advocating for Cultural Excellence
- South Asian Medical Student Association
- Street Medicine
- Student National Medical Association
- Veterans Health Initiative
- Women In Anesthesiology Medical Students



COMMUNITY ENGAGEMENT

MISSION

Provide partner-driven, meaningful, evidence-based educational opportunities that improve health, build resilience and meaningfully engage UTMB students in the community

VISION

Reduce health inequities by harnessing the collective enthusiasm of UTMB students to be agents of change in addressing the social determinants of health in communities we serve

VALUES

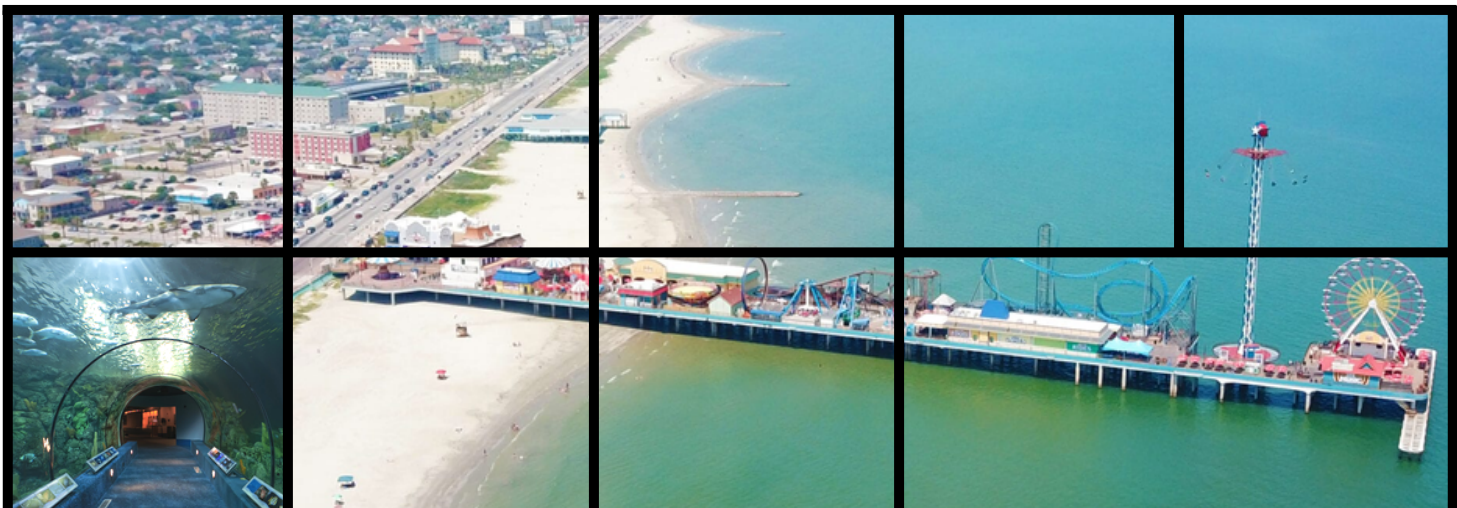
President's Institute for Innovation in Community Engagement and Interprofessional Education is guided by Social Justice, Equity, Humility, and Ethical Partnerships

I-COPE (Interprofessional Continuity of Practice Experience)

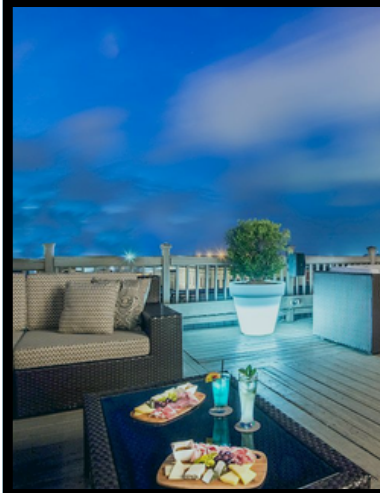
- Embed students in the practice of longitudinal holistic patient care in an interprofessional patient-centered medical home
- To establish relationships with faculty role models outside the student's profession
- Serve as an educational innovation hub and model for value-added education

Volunteer Sites

- St. Vincent's House
 - Continuity Clinic
 - Heart Failure Clinic
 - IP Clinic
 - Grace Clinic
- Galveston Central Church
- Jennie Sealy Hospital
- Mobile Clinic
- Christus - Our Daily Bread
- Christina Sullivan Foundation
- Inclusive Athletics



STUDENT LIFE, ISLAND LIFE & BEYOND



Activities

Student Life

- 90 active student organizations at UTMB



Island Life

- Dickens on the Strand
- Mardi Gras
- Lone Star Biker Rally
- Great studying locations @ your local coffee shops
- BBQ Cookoff
- Oktoberfest
- Periodic Art Walks
- Juneteenth
- Great food variety for everyone

Houston/Clear Lake/League City

- Livestock Show and Rodeo
- One of the country's top cities for foodies
- NASA headquarters
- The country's 4th largest museum district
- Thriving arts scene: ballet, opera, symphony and theater
- Top Golf
- Shopping



To learn more about how the UTMB John Sealy School of Medicine can make a difference in your life contact:

Visit: <https://som.utmb.edu>

Email: somadmis@utmb.edu

Call: (409) 772-6958

Follow us on Social Media:



<https://www.facebook.com/JohnSealySOM.edu>



https://www.instagram.com/utmb_johnsealy_som/